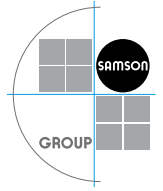
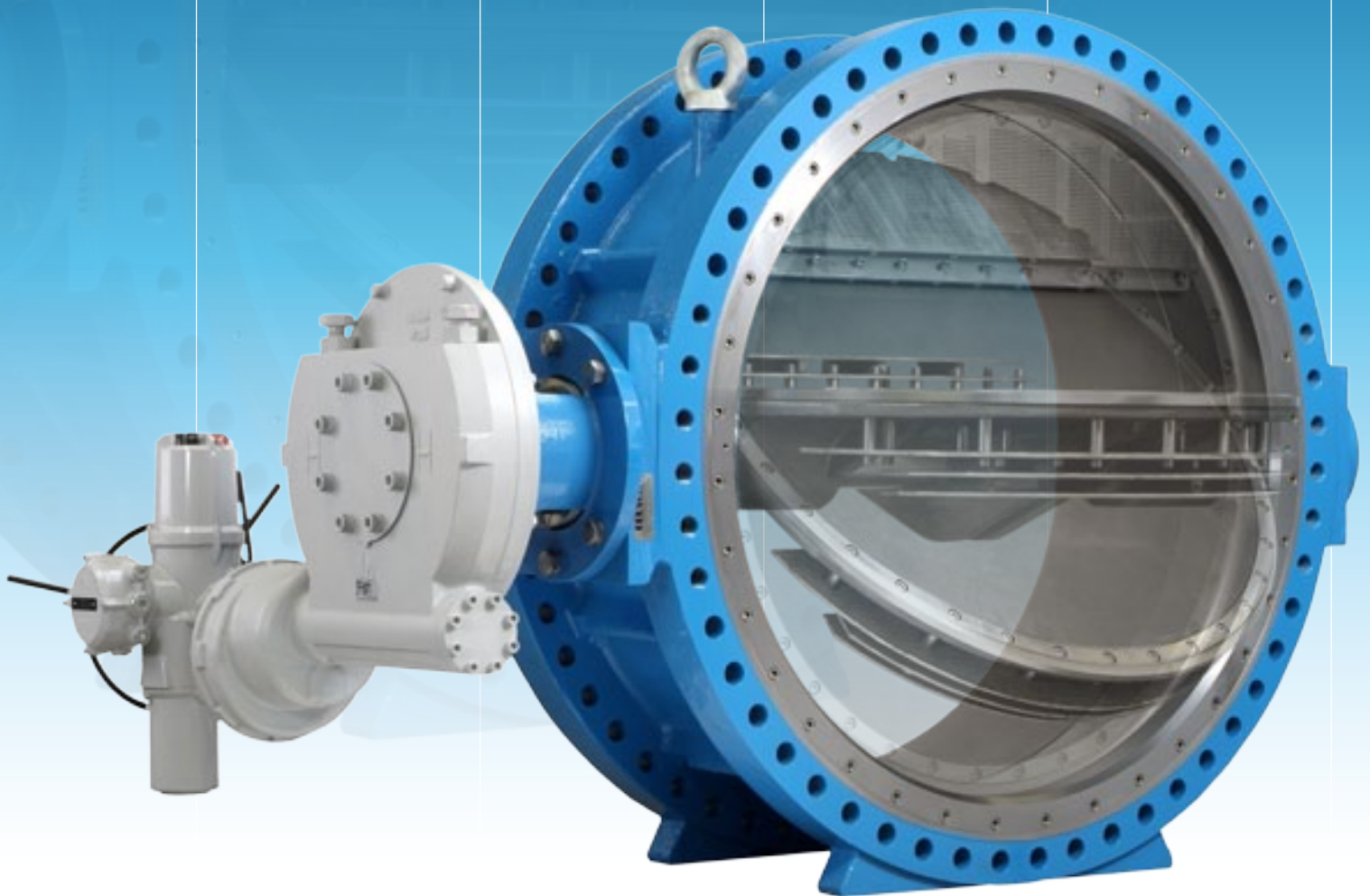


LEUSCH



Industrial Valves



LEUSCH

Since 1974 LEUSCH stands for the development and production of high-quality industrial valves.

At the headquarter in Neuss LEUSCH produces valves for industrial applications on the request of world-wide customers. Our main fields of application are in chemical industry, pulp and paper industry, refineries, sea water desalination plants, waste water treatment, gas extraction and transport, ship building, offshore technology etc.

The specific construction characteristics and the use of high quality materials qualify our "High Performance Valves" for most extreme operating conditions such as low and high temperature applications as well as high pressure.



The range of products consists double and triple eccentric control and on-off butterfly valves, ball valves, ball segment valves and special valves with pneumatic, hydraulic or electric actuators.

Since 2003 LEUSCH GmbH belongs to the global going SAMSON AG based in Frankfurt am Main. This is why international sales and after sales service is guaranteed.





ISO 9001 & CE

In order to guarantee the high quality requirements on our products, our construction and production is based on ISO 9001:2008, HP 0 / TRD 201, and TRB 801, no. 45 and the European Directive for Pressure Equipment 97/23/EC.

The valves leaving our works have been subject to 100 % testing procedure. By a production schedule the customer knows at any time the status of production of his valves.



Triple Eccentric Control and Shut-off Butterfly Valve LTR 43



LEUSCH



Size 3" – 100" (DN 80 – 2500)
Rating ANSI 150 – 2500 (PN 6 – 420)

- Wafer, lug, double flanged or butt weld ends
- Metal or soft seated
- Leakage Class VI to ANSI FCI 70-2 / IEC 60534-4
- Seat ltt Laminated 316SS/Graphite or special material
- Designed to ANSI B16.34 and API 609
- Materials: C-Steel, Stainless steel, Titanium, Hastelloy, Inconel, Monel, Duplex, SMO, Bronze etc.

Option:

- Packing acc. to TA-Luft
- Low Noise / Anti Cavitation trim
- Heating jacket
- Anti surge design
- ESD-Application
- Outer bearing, inner packing
- Cryogenic or high temp. service

Triple Eccentric Control and Shut-off Butterfly Valve LTR 43, Special Application



ESD (Emergency Shutdown) Butterfly Valve

Metal seated, Fire safe

Pneumatic operated (double- or single acting)

Option:

- Fire proof protection for actuator and accessories to UL-1709
- Partial stroke test (PST) mechanically or electronically
- Remote valve operation station
- Air reservoir system
- Handwheel

Control Butterfly Valve LTR 43 16" ANSI 300#

with Low Noise / Anti Cavitation trim

with Silencer incl. hole plates

metal seated

seating and seat stellite

with spring return Actuator, AFO

and E/P Positioner

High Performance Butterfly Valve



Size 3" – 48" (DN 80 – 1200)
Rating ANSI 150 – 300 (PN 6 – 50)

- Wafer, lug or double flanged
- Metal or soft seated
- Leakage Class V-VI to ANSI FCI 70-2 / IEC 60534-4
- Seat 1.4462, Hastelloy or filled PTFE
- Designed to DIN
- Materials: Stainless Steel, Titanium, Duplex, SMO

Option:

- Packing acc. to TA-Luft
- Low Noise
- Heating jacket

LEUSCH



Ball Segment Valve, KVT centric or eccentric



Size 1/8" – 28" (DN 25/2 – 700)
Rating ANSI 150 – 600 (PN 10 – 100)

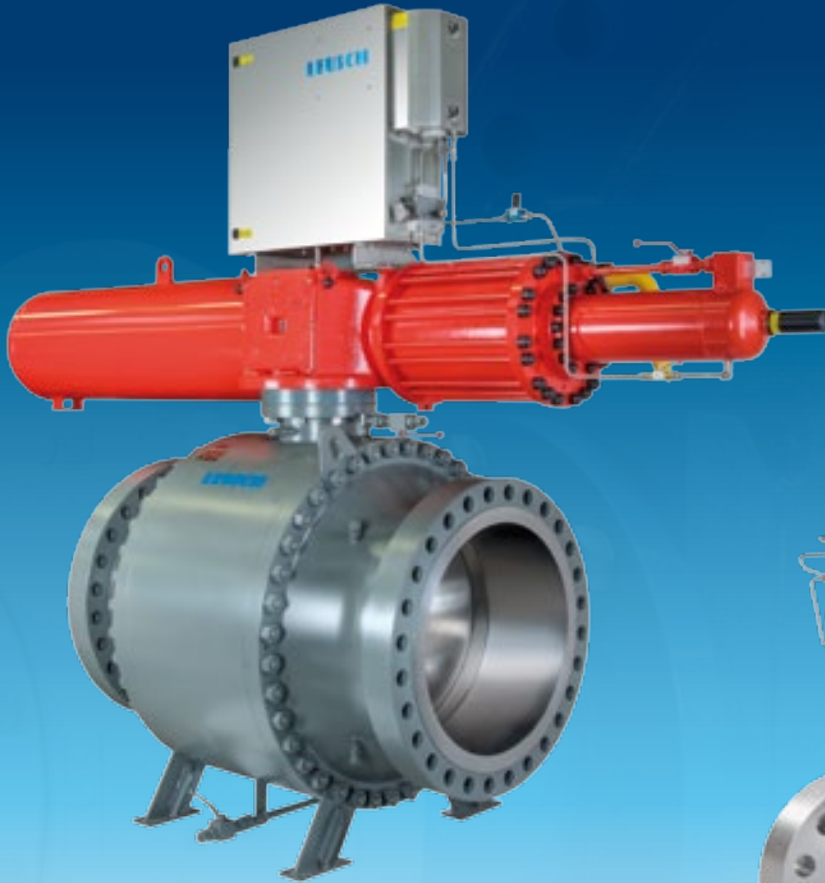
- Wafer or flanged type
- Metal or soft seated
- Leakage IV-VI to ANSI FCI 70-2 / IEC 60534-4
- Seat PTFE, SS-filled PTFE or Stellite
- Designed to DIN
- Materials: Stainless Steel, Titanium, Hastelloy, Duplex

Option:

- V-notch
- Scraper seat design
- Low Noise
- Heating jacket



Ball Valve "Trunnion mounted" On/Off and Control Service



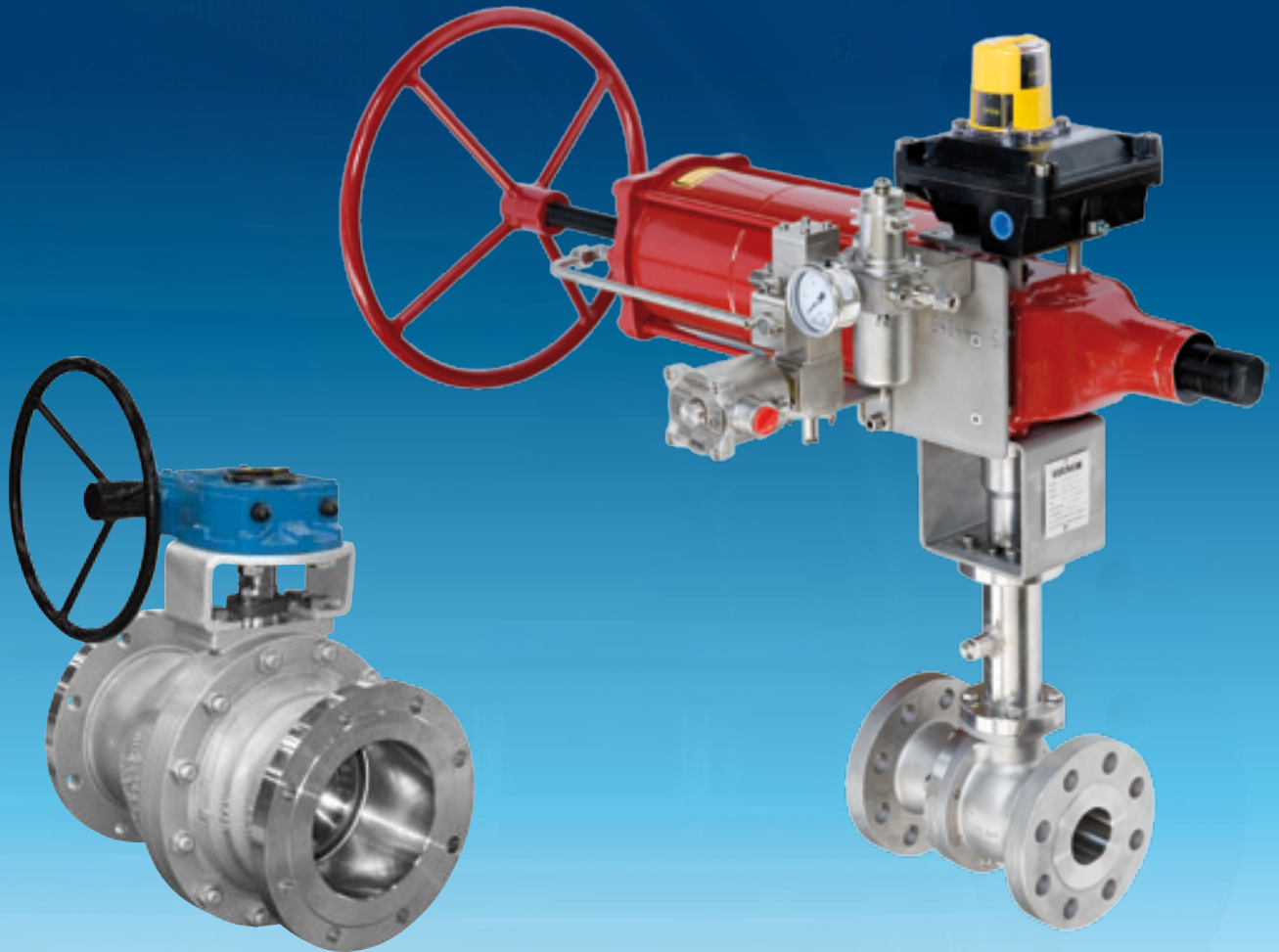
Size 1" – 60" (DN 25 – 1500)
Rating ANSI 150 – 2500 (PN 10 – 420)

- Flanged or butt weld ends
- Trunnion mounted
- Side or Top entry
- Leakage IV-VI to ANSI FCI 70-2 / IEC 60534-4
- Seat PTFE, SS-filled PTFE, PEEK, Nylon or SS hardfaced
- Materials: C-Steel, Stainless Steel, Titanium, Hastelloy, Duplex, etc.

Option:

- Packing to TA-Luft
- Low Noise / Anti Cavitation trim
- Heating jacket
- Anti Surge design
- ESD-Application
- Cryogenic or high temp. service

Ball Valve "Floating Ball" On/Off and Control Service



Size 1" – 16" (DN 25 – 400)
Rating ANSI 150 – 300 (PN 10 – 50)

- Flanged or butt weld ends
- Floating ball
- Side entry
- Leakage IV-VI to ANSI FCI 70-2 / IEC 60534-4
- Seat PTFE, SS-filled PTFE or Stellite
- Materials: C-Steel, Stainless Steel, Duplex

Option:

- Packing to TA-Luft
- Scraper seat design

SAMSON Group

Globe Valve, Actuator and Accessories



LEUSCH



Globe Valve

Size 1/2" – 24" (DN 15 – 600)
Rating ANSI 150 – 2500 (PN 10 – 420)

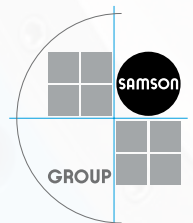
- Flanged, threads or butt weld ends
- Globe, Angle- or 3-way valve
- metal or soft seated
- Cryogenic or high temp. service

Option:

- Bellows seal
- Heating jacket
- Low Noise / Anti Cavitation trim

Actuator and Accessories

- Pneum. double or single acting Actuator
- Handwheel
- Pneum. or electropneumatic Positioner
- Booster
- Solenoid Valve
- Limit Switch
- Filterregulator



Special Butterfly Valves

“Top Entry” Design

Type LTR 43, with butt weld ends
In-line servicing / easy maintenance
with extension for Cryogenic-Service (-196°C)
metal seated
with spring return Actuator, AFC
and E/P Positioner 3730-3 (HART)



16" ANSI 900

Type LTR 43, flanged type
with extension for Cryogenic-Service (-196°C)
metal seated, Leakage Class VI
with spring return Actuator incl. Damping system
stroking time: < 0,5 sec.



Control Butterfly Valve

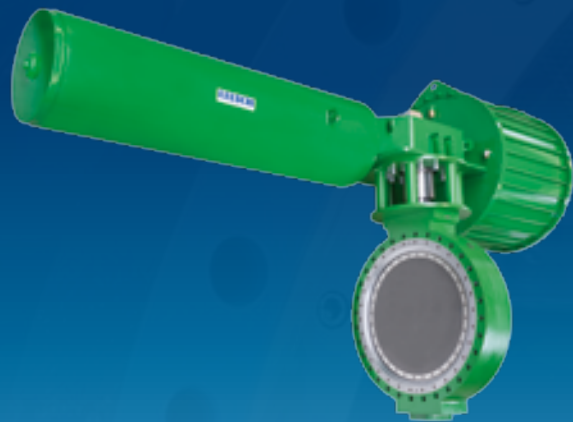
Type LTR 43, with butt weld ends
with extension for Cryogenic-Service (-196°C)
incl. “Cold Box” flange



Special Butterfly Valves

ESD Valve 44" ANSI 300#

Type LTR 43, lug type
metal seated, Fire safe
with spring return Actuator, AFC
and ESD Positioner SAMSON 3730
(Partial stroke test)



"Anti Surge" 24" ANSI 300#

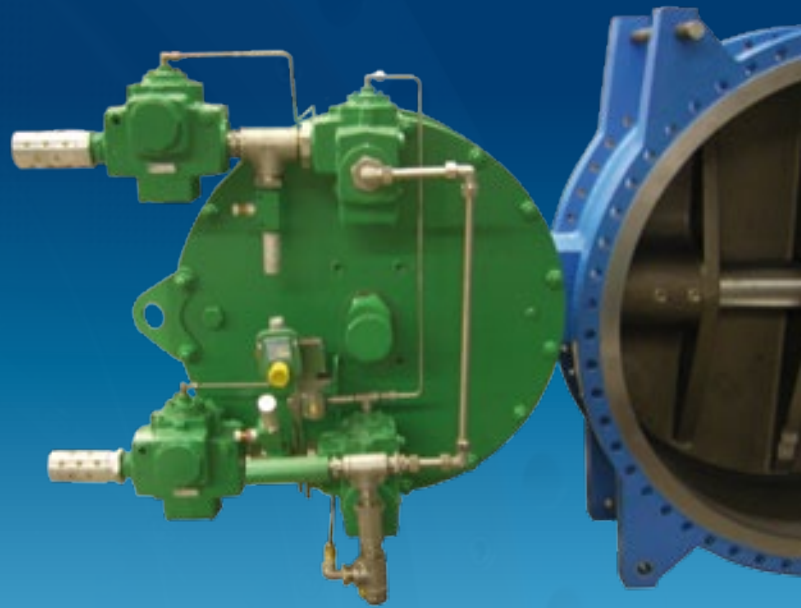
Type LTR 43, flanged type
with Low Noise for start up flow
with outer bearing and inner packing
with single acting Actuator, AFO
and E/P Positioner 3731 (EExd)



Special Butterfly Valves

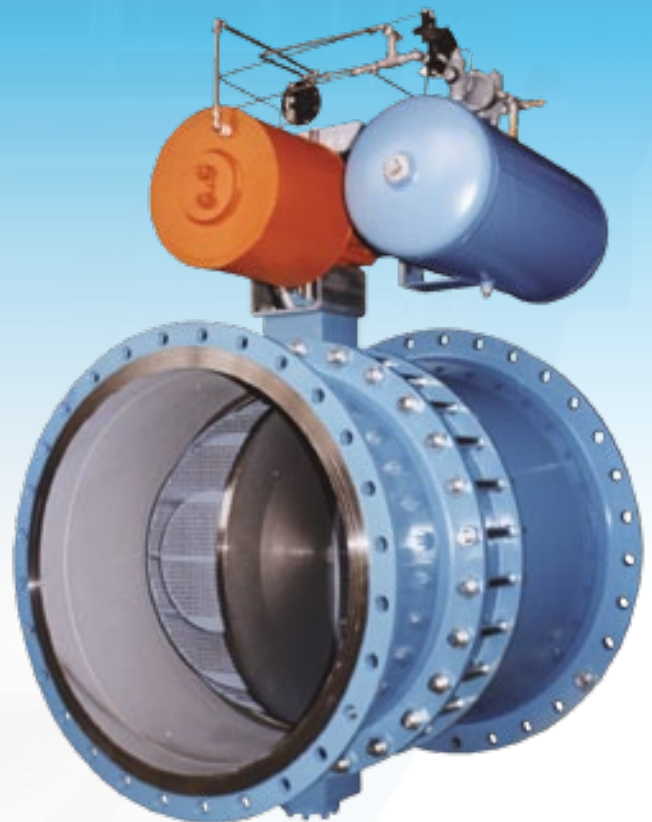
Shut-off Valve 54" ANSI 150

Type LTR 43, flanged type
metal seated, Leakage Class VI
with spring return Actuator incl. Damping System
stroking time: < 1 sec.



Control Valve 48" ANSI 150 with Low Noise / Anti Cavitation trim with Silencer incl. hole plates

flanged type, metal seated
with double acting Actuator incl. Air Reservoir



Special Ball Valves

Control Ball Valve 16"/24" ANSI 300 with Low Noise / Anti Cavitation trim (LN-TRIM) and Diffuser 16"/24"

Type BVL 63-LN
flanged type, Side entry
metal seated (with one seat)



Ball Valve DN 200/100 PN 16 for high temperature service 800°C

Type BVL 63-HT, Top entry



ESD Valve 16" ANSI 300

Top entry, metal seated
with spring return Actuator
and ESD Positioner 3730 (Partial stroke test)



Scope of Supply

Butterfly Valves

3" – 100" (DN 80 – DN 2500)
ANSI 150 – 2500 (PN 10 – 420)

Ball Segment Valves

1/8" – 28" (DN 25/2 – DN 700)
ANSI 150 – 600 (PN 10 – 100)

Ball Valves

1/2" – 60" (DN 15 – DN 1500)
ANSI 150 – 2500 (PN 10 – 420)

Threeway Valves or Multiport

1/2" – 36" (DN 25 – DN 900)
ANSI 150 – 2500 (PN 10 – 420)

Special Valves

on your request

Actuator and Accessories



5" Flanged

64" Weld Ends

**Metal or soft seated valves, Low Noise design
and special materials on request.**

LEUSCH

